

Endpoint Management Services

# Unlock productivity and security across every Apple endpoint





# Manage, secure, and scale your Apple ecosystem with confidence

## Market Context

Organizations are increasingly adopting Apple devices as part of their standard workplace technology. Mac, iPhone, and iPad are now common tools across many roles, from corporate teams to frontline employees. As these devices become more integrated into everyday operations, IT leaders must ensure they are deployed, managed, and maintained in a way that supports both employee productivity and organizational standards.

At the same time, managing Apple devices at scale requires more than simply enrolling them into a management platform. IT teams must design the right configuration frameworks, establish reliable deployment processes, and ensure devices remain aligned with security, identity, and operational policies throughout their lifecycle. Mobidelio's Endpoint Management Services help organizations build and operate the foundations required to manage Apple devices effectively—ensuring they remain secure, well configured, and ready to support the modern workplace.

## AxM Remote Services

### Highlights

- Configure and manage Apple Business Manager so organizations can deploy and control Apple devices with confidence
- Ensure Apple devices are properly assigned, enrolled, and integrated into enterprise management systems
- Maintain accurate device ownership, purchasing records, and enrollment workflows across the organization
- Ensure Apple Business Manager works smoothly with device management platforms to simplify device provisioning at scale

AxM Remote Services help organizations properly configure and operate Apple Business Manager as the foundation for managing Apple devices in the enterprise. Apple Business Manager plays a critical role in enabling automated device enrollment, application distribution, and device ownership management. When configured correctly, it allows IT teams to deploy Mac, iPhone, and iPad devices in a controlled and scalable way.

Through AxM Remote Services, organizations can ensure their Apple Business Manager environment is properly structured, integrated with device management platforms, and maintained according to best practices. The result is a reliable operational foundation that simplifies device deployment, strengthens control over corporate devices, and supports the long-term management of Apple devices across the organization.



## How AxM Remote Services work

AxM Remote Services provide a structured approach to implementing Apple Business Manager as the operational foundation for managing Apple devices in the enterprise. The service begins with a guided introduction to the platform and the key capabilities it enables, helping organizations understand how Apple Business Manager supports device ownership, enrollment, and application distribution. From there, the environment is configured to reflect the organization's structure, including account roles, administrative responsibilities, and secure access controls.

Once the organizational framework is established, the service continues with the configuration of essential capabilities such as federated authentication and application purchasing through Apple's volume licensing framework. The process concludes with full integration between Apple Business Manager and the organization's device management platform, enabling automated device enrollment and streamlined deployment workflows. The result is a secure and well-structured environment that allows organizations to deploy Apple devices efficiently and maintain clear operational control over their fleet.

## Customer benefits

A properly configured Apple Business Manager environment gives organizations a reliable foundation for managing Apple devices at scale. With the right structure in place, IT teams gain clear visibility into device ownership, streamlined enrollment processes, and consistent control over how devices are deployed across the organization. This makes it easier to introduce new devices, maintain accurate records, and ensure every Apple device enters the environment in a controlled and predictable way.

At the same time, a well-established Apple Business Manager environment simplifies day-to-day operations for IT teams. Automated enrollment and integrated purchasing workflows reduce manual work, while clearly defined administrative roles improve governance and accountability. The result is a more efficient deployment process, stronger operational control over Apple devices, and a smoother experience for both IT teams and employees receiving their devices.

## Key capabilities

- Apple Business Manager enrollment and organization setup
- Domain verification and federated authentication configuration
- User, role, and access model design
- Device ownership and assignment strategy
- Integration with mobile device management (MDM)
- Validation, documentation, and operational handover

## Real results

- Zero-touch deployment readiness
- Reduced provisioning time and manual effort
- Stronger governance and access control
- Scalable Apple management foundation



# Device Management Configuration Services

## Highlights

- Design and configure MDM environments that support Mac, iPhone, and iPad at scale
- Ensure devices are ready to use from the moment they are deployed
- Maintain reliable standards across every device in the organization
- Align Apple device management with identity, security, and operational systems

Mobidelio's Device Management Configuration Services help organizations establish a management environment designed specifically for Apple devices operating at scale. Our experts design and configure MDM platforms so they align with the organization's operational structure, security policies, and deployment processes. This includes automating device enrollment, defining configuration profiles, establishing policy frameworks, and ensuring Apple devices are consistently managed from the moment they enter the organization.

The service also focuses on ensuring the device management environment works smoothly with existing systems such as identity platforms, security frameworks, and enterprise infrastructure. By aligning device management with the broader IT ecosystem, organizations gain a reliable framework for managing macOS, iOS, and iPadOS devices in a consistent and scalable way. The result is an operational foundation that simplifies device administration, strengthens security practices, and delivers a predictable experience for both IT teams and Apple users.



## Device management configuration solution strategy

Mobidelio approaches device management as a foundational capability that must be carefully designed before it can scale effectively. The service begins by understanding how Apple devices are used within the organization and how they must align with existing operational, security, and identity frameworks. Based on this understanding, the device management environment is configured to support automated enrollment, standardized device configurations, and clear policy structures that ensure every device enters the organization in a controlled and consistent way.

From there, the management framework is aligned with the broader IT ecosystem so that Apple devices operate smoothly within the organization's existing infrastructure. Identity services, security policies, and operational processes are coordinated with the device management platform to ensure devices remain properly configured throughout their lifecycle. The result is a reliable and scalable management foundation that simplifies administration, strengthens security practices, and allows Apple deployments to grow without adding unnecessary operational complexity.

## Customer benefits

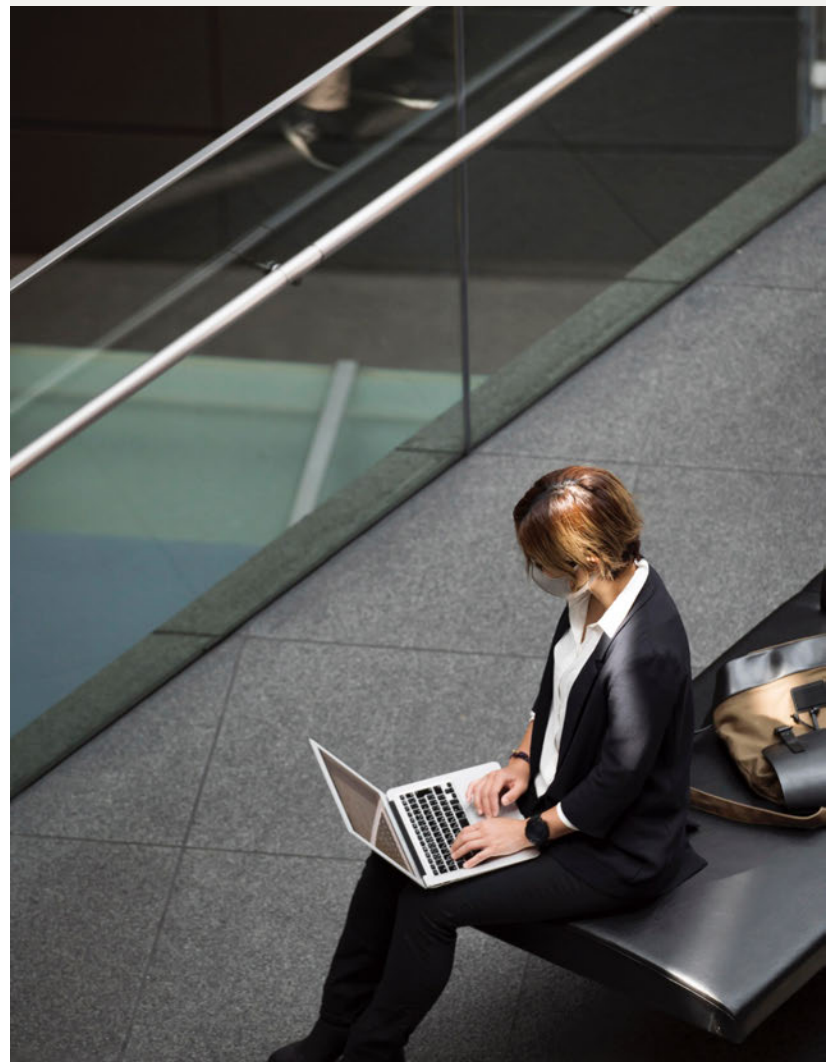
- **Consistent device management across the organization**
  - Every Mac, iPhone, and iPad is configured according to the same standards, ensuring reliability and predictable behavior across the environment.
- **Faster and simpler device deployment** – Automated enrollment and configuration allow new devices to be ready for use quickly, reducing setup time for both IT teams and employees.
- **Stronger security and policy enforcement** – Security settings and management policies are applied consistently, helping organizations maintain control over devices and protect corporate data.
- **Reduced operational workload for IT teams** – A well-structured management framework minimizes manual configuration and ongoing maintenance, allowing IT teams to focus on higher-value initiatives.

## Key capabilities

- macOS, iOS, and iPadOS configuration design
- Security and compliance policy implementation
- Application deployment and management setup
- Device lifecycle workflow configuration
- Policy standardization and cleanup
- Documentation and configuration validation

## Real results

- Reduced configuration drift and policy sprawl
- Improved security and compliance consistency
- Lower support workload related to misconfiguration
- Predictable, repeatable device behavior



# iOS Mobility Accelerator

## Highlights

- Unlock the potential of iPhone and iPad in the workplace. Identify practical ways mobile technology can improve daily work and business operations.
- Accelerate mobile innovation. Move quickly from ideas to validated solutions that support both employee productivity and customer experiences.
- Explore real-world mobile use cases. Discover where iOS devices can simplify workflows, improve responsiveness, and enable new ways of working.
- Turn mobility opportunities into actionable initiatives. Evaluate impact and build a clear path for deploying mobile solutions across the organization.

The iOS Mobility Accelerator is a structured program designed to help organizations rethink how work can be done through iPhone and iPad. Many businesses recognize the potential of mobile technology but struggle to identify where it can deliver meaningful impact. This program provides a guided process to explore mobile opportunities, helping organizations uncover practical use cases across both internal operations and customer-facing activities.

Through a combination of discovery workshops, structured evaluation frameworks, and rapid prototyping approaches, organizations can quickly test and validate mobile ideas before committing to broader deployments. This allows IT and business leaders to move beyond experimentation and identify mobility initiatives that truly improve efficiency, productivity, and user experience.



## Expertise and tools to enable a successful iOS deployment

Successful mobile initiatives require more than selecting the right devices or applications. Organizations must understand how mobility fits into existing workflows, operational processes, and employee roles. The iOS Mobility Accelerator brings together Apple-focused expertise and proven evaluation frameworks to help organizations identify where mobile technology can create meaningful improvements in the way work gets done.

Using structured discovery methods and practical evaluation tools, the program helps organizations analyze workflows, test potential mobile solutions, and understand their operational impact. This approach reduces uncertainty and provides leadership with a clearer path toward deploying iPhone and iPad solutions that align with real business needs.

## Solution benefits

- **Clear visibility into mobile opportunities** – Organizations gain a structured view of where iPhone and iPad can improve workflows and operations.
- **Faster validation of mobile initiatives** – Ideas can be tested and evaluated quickly before committing to full-scale deployments.
- **Better alignment between business and technology teams** – Mobility initiatives are explored collaboratively, ensuring solutions address real operational needs.
- **Stronger outcomes from iOS deployments** – Organizations move forward with mobile solutions that are practical, validated, and capable of delivering measurable improvements.

## Key capabilities

- Mobility opportunity discovery
- Structured mobility workshops
- Workflow and use-case evaluation
- Rapid prototyping and validation
- Business impact assessment
- Deployment readiness guidance

## Real results

- New ways of working with iPhone and iPad
- Faster decision-making around mobility investments
- Stronger collaboration between business and IT teams
- Higher confidence in mobile deployments
- Improved employee and customer experiences



# Technical Readiness Evaluation

## Highlights

- **Understand your readiness for Apple at scale.** Gain a clear view of how well your current IT environment supports large Apple deployments.
- **Identify infrastructure and policy gaps early.** Discover potential issues across network, identity, and security frameworks before deployment begins.
- **Align Apple deployment with your existing IT architecture.** Ensure Apple devices integrate smoothly with your current systems and operational standards.
- **Build a confident path to deployment.** Turn technical insights into a clear plan for introducing Apple devices across the organization. standards, and account management practices remain consistent and auditable across the organization.

## Overview

The Technical Readiness Evaluation provides organizations with a structured assessment of their IT environment before introducing or expanding Apple devices at scale. Deploying Mac, iPhone, and iPad across an enterprise requires more than device management tools—it depends on how well infrastructure, identity systems, network configuration, and security policies support the Apple ecosystem. This evaluation provides a comprehensive review of those elements to understand how prepared the organization is for large-scale Apple deployments.

Through this process, Mobidelo analyzes the current environment to identify strengths, potential gaps, and operational dependencies that could affect device management, security enforcement, or user experience. The result is a clear understanding of what is already in place and what may require adjustment, allowing organizations to move forward with Apple deployments in a controlled and predictable way.



## Organizational challenges

Organizations often begin adopting Apple devices without a full understanding of how their existing IT environment will support them. Infrastructure components such as identity services, network access policies, security frameworks, and device management platforms must work together for Apple deployments to function smoothly. When these elements are not properly aligned, organizations may encounter issues with device enrollment, authentication, network access, or policy enforcement.

These challenges can become more pronounced as Apple deployments grow. What works for a small number of devices may not scale effectively across larger environments. Without a clear assessment of infrastructure readiness, IT teams may face unexpected operational complexity, security gaps, or deployment delays. Understanding these dependencies early is essential for ensuring Apple devices integrate successfully into the broader enterprise environment.

## Solution benefits

A clear understanding of technical readiness helps organizations deploy Apple devices with greater confidence.

By evaluating infrastructure, identity systems, and security frameworks in advance, IT teams can identify gaps early, align systems more effectively, and create a stronger foundation for managing Apple devices at scale.

A successful technical readiness evaluation will provide:

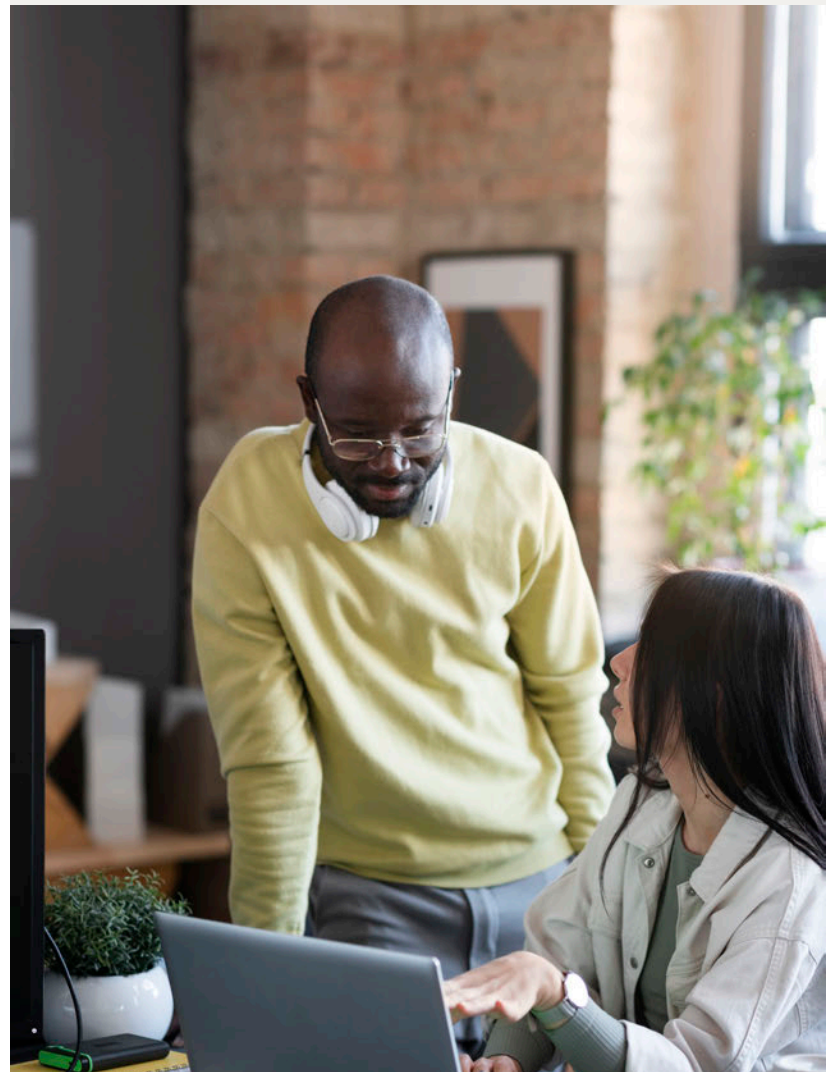
- Clear understanding of Apple deployment readiness: Organizations gain a structured view of how well their current infrastructure, identity systems, and security policies support Apple device management.
- Early identification of risks and gaps: Potential integration challenges and operational dependencies are identified before large deployments begin, reducing the risk of disruptions later.
- Better alignment between Apple devices and enterprise infrastructure: The evaluation helps ensure Apple devices integrate smoothly with existing network, identity, and security frameworks.
- More confident and predictable Apple deployments: With a clear understanding of readiness and required adjustments, organizations can move forward with Apple deployments in a controlled and well-prepared manner.

## Key capabilities

- Infrastructure and identity readiness assessment
- Device management and deployment capability review
- Security and compliance gap analysis
- IT support and operational readiness evaluation
- Risk identification and prioritization
- Executive-ready findings and recommendations

## Real results

- Reduced deployment and migration risk
- Clear roadmap for Apple readiness improvements
- Better alignment across IT, security, and business teams
- Confident decision-making for Apple initiatives



## Why Mobidelio?

Mobidelio brings deep expertise in designing, operating, and supporting Apple environments at scale. Our focus is on helping organizations build modern, reliable Apple workplaces that integrate seamlessly with enterprise infrastructure while maintaining the simplicity and performance that Apple technology is known for.

We build on this expertise by continually evolving how IT services are delivered and supported in the enterprise by:

- Partnering with leading Apple technology platforms
- Investing in Apple enterprise expertise
- Working closely with clients to unlock Apple's full potential

At Mobidelio, we help organizations design, build, and support future-ready Apple workplaces that empower people to do their best work.

## For more information

To learn more about Mobidelio Employee Digital Services or talk to one of our consultants, reach us out at [mobidelio.com/services/employee-experience](https://mobidelio.com/services/employee-experience).

Copyright Mobidelio, 2026. All Rights Reserved.

The information contained in this document is provided "as is" without any express or implied warranties, including, but not limited to, warranties of merchantability, fitness for a particular purpose, or non-infringement. Any warranties applicable to Mobidelio IT Services are governed exclusively by the terms and conditions set forth in the agreements under which those services are delivered.

